

HUNTINGDON REGATTA SUNDAY 5TH JULY 2026

SAFETY PLAN AND SAFETY RULES – SAFETY BRIEFING

The following information defines key Regatta rules, procedures and guidelines, which must be fully adhered to by all regatta crews and officials.

It is a condition of racing that coaches of visiting clubs must go through this Safety Briefing with every crew – and especially their coxes – before boating.

- **Race Control** – Located on the Finish Line. Race Control will be a tented complex incorporating Race Committee, Umpires, Race Entries and First Aid.
- **Race Committee and ERSA** co-ordinate safety and rescue on the regatta course and all areas within the limits of the marshalling area.

Whilst in the area of the regatta as defined in the circulation plan, all competitors are under the authority of the regatta and must follow all the instructions given by officers of the regatta – this is particularly relevant in emergency situations.

The regatta is being run in full compliance of the BR Water Safety Code and the Huntingdon Boat Club Safety Management Plan.

- Safety boat 1 will be moored on south bank, at the 2/3rd point of the course.
- Safety boat 2 will be moored on north bank, at just beyond the regatta finish line.
- Movement of Marshals
 - The river is small enough and course short enough that a following Marshal's boat is not required. Control of racing can be maintained from the bank by Marshals 1, 2 & 3.
- All safety boats will be afloat before racing crews are boated prior to any racing. Approval to go afloat and for racing to commence will be given by the Race Committee once all safety boats and Marshals are in position.

1. Trailer and car park

What3words – maker.happily.overgrown. Map attached. The regatta field is near Hartford roundabout and NOT at the boat club.

Boat trailers

– referring to the course map, are to be parked in the Trailer and Boating area. Towing vehicles need to be parked away from the trailers in the parking area on the Field. All other vehicles, unless there is a specific need, should be parked in the car parking area. Boats will be stored during the regatta on trestles on the grass area adjacent to their Club's trailer.

2. Boating / landing (as directed by marshals)

Launchings and landings will be from the two landing stages upstream of the finish. Marshals will coordinate.

Crews **must not** get boated before being paired with competitors by the Marshals. Random checks of safety equipment (e.g. heel straps, bow balls, hatch covers, etc) as well as coxes' lifejackets will be carried out by an *Umpire on control commission duty*. It must be emphasised that it is the Clubs' responsibility – not that of the Regatta – to ensure that they row in equipment that conforms to the Water Safety Code. The passing of a random check, for example on a bow ball, should not be interpreted as tacit approval or acceptance by the Event that the boat, as a whole is safe.

Boating – from the landing stage, proceed upstream where you will be held by Marshals until instructed to proceed to the start.

Start – continue downstream past the start where you will be held by Marshals until instructed to proceed to the race start (stake boats).

Landing – after crossing the finish line wait upstream until instructed by Marshals to proceed to the landing stage. Marshals will assist (where possible) with the removal of boats from the water.

Supporters – For reasons of safety and expediency, supporters are not allowed in the boating area or on the pontoons, a coach may accompany each crew in this area.

3. Boat circulation plan (see attached course map)

Navigation – at all times normal navigation rules apply – keep to the south bank heading downstream and the north bank when heading upstream.

Crews waiting to race, or post-race are not permitted on the course whilst racing is in progress; failure to comply will result in an official warning or disqualification.

The 900-metre course will be buoyed into two racing lanes, the racing lanes will utilise the full width of the navigational river, and hazardous areas will be buoyed off. Non-regatta river traffic and racing will be directed by Marshals at either end of the course.

Competing crews going to the start are reminded to give priority to other river users.

Practice starts are not permitted within the bounds of the Marshalled area. Adequate space exists upstream of the regatta sight for warm-ups and practice starts before heading down to the start.

Crews must remain within calling distance of the Marshals for instructions to proceed to the start.

4. Racing

All crews upstream of the start will be under the control of the Start Marshals. Instruction given by the Start Marshals must be obeyed at all times. Failure to do so may result in the offending crew receiving an official warning. Crews should line up on the start when instructed to do so. A stake boat start is used.

The Race Umpire will direct crews when they are on the start. Races will be started according to BR rules.

5. Incidents

All incidents are to be reported to the Race Committee and ERSA, coaches are also to report their incidents using the BR incident reporting system.

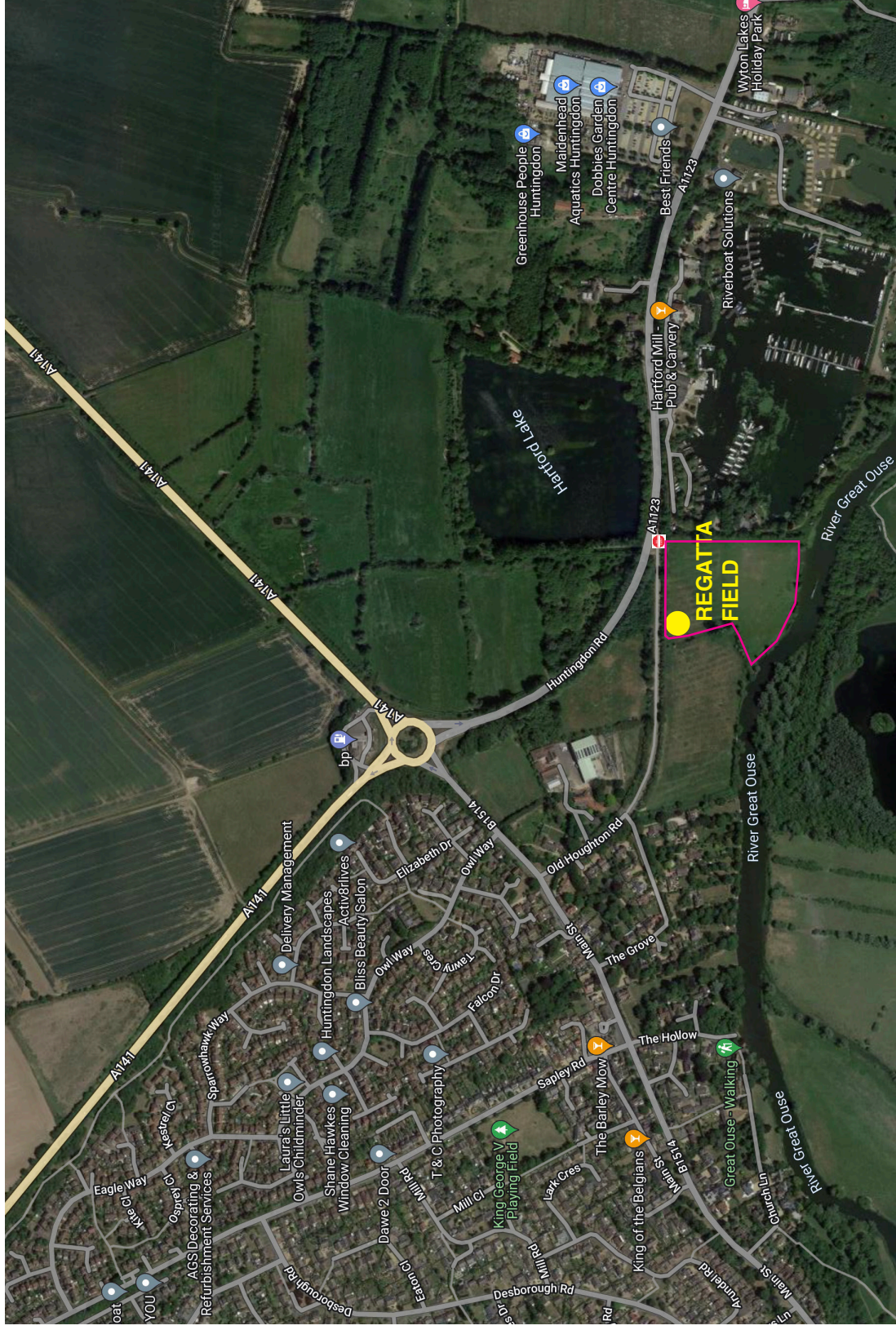
6. What to do in an Emergency

- **Any accident** – Racing will be suspended by race officials until such time that the casualties have been attended and the course is in a clear state, safety boats are back on station and approval is given by the Race Committee. Regatta Control will make the necessary arrangements with the Emergency Services and liaise with Race Committee regarding the incident.
- **On water incident** – Safety Boats will provide an immediate response and rescue if required. Should the medics be required to go afloat, safety jackets will be made available, and they will be accompanied by an experienced launch driver.

Due to the remoteness of the Regatta Field, Mobile Phones will be used if Emergency Services need to be contacted. Telephone number 112 or 999; 112 automatically provides co-ordinates.

7. First Aid

- Qualified First Aiders will be in attendance at the Regatta – based at the Race Control.
- The safety launches will carry a first aid kit as specified in the Water Safety Code.



St Ives

Huntingdon

what3words: maker.happily.overgrown

Old Houghton Road, Hartford, Huntingdon PE29 1YB